

Customer :

customer

Customer part :

customer part

Comment :

Comment

S1=0.06

S2=0.41

Tmax=600

Tp S2=639.0

PI=0.12

HI=16

Sample =2929.7

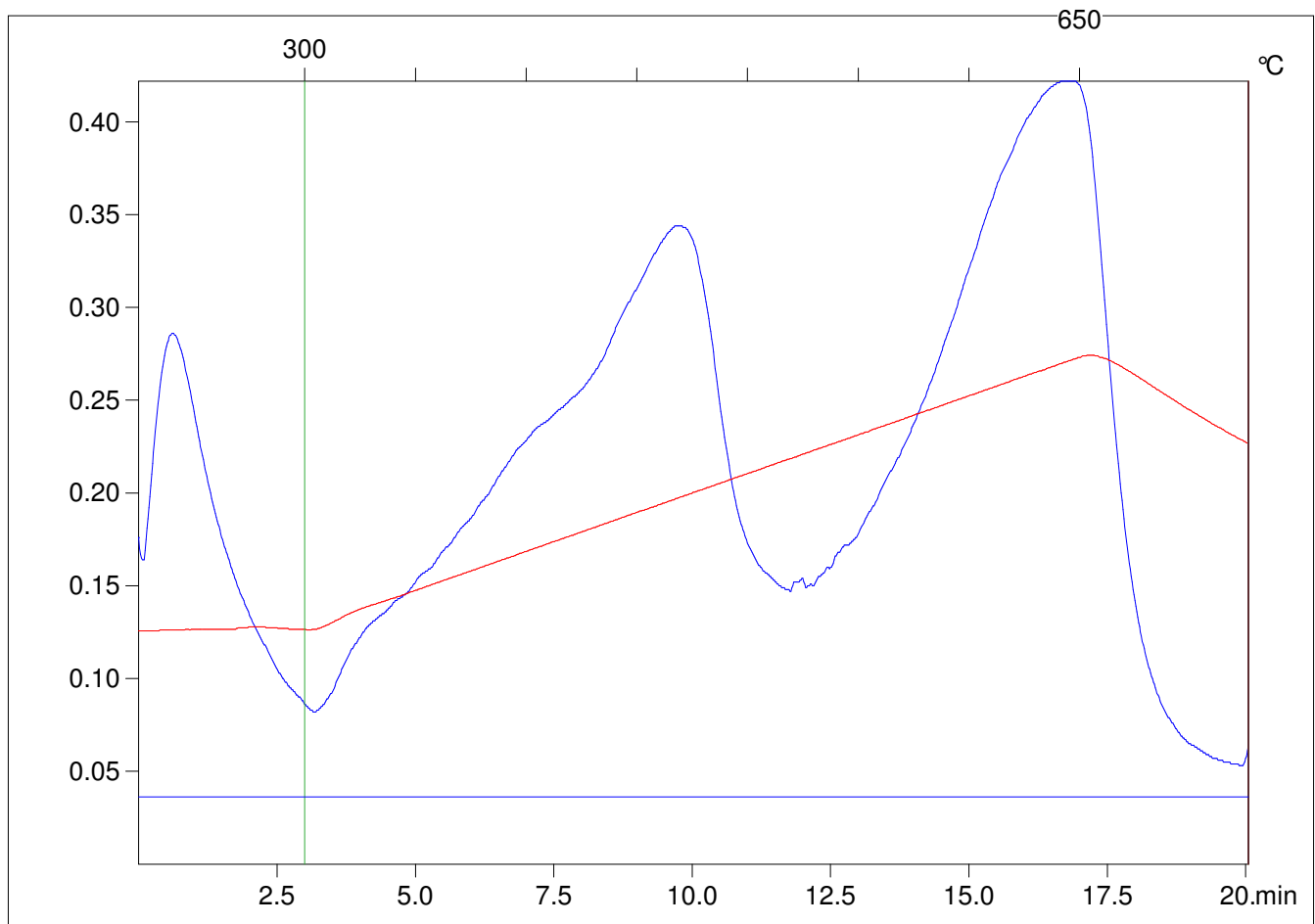
Method =Bulk Rock

Cycle=Basic

KFID(10*9)=1550

Qty =70.8

TOC=2.51



C:\VINC\PK130315\PK030.R00 : FID pyrolysis graphic

State

Pyro Status

Oxi Status